

# Little Brickhill Parish Council Snippets Report

October 2024

## Pension Credit

GOV.UK



### Could you, or someone you know, be missing out on Pension Credit?

Pension Credit tops up pension income and can help with day-to-day living costs. If you are over State Pension age, you may be eligible to claim Pension Credit, even if you own your home or have savings.

You can claim as soon as you reach the qualifying age, which is now State Pension age.

Pension Credit is worth, on average, £3,900 per year and unlocks additional support including help with Council tax, NHS dental care and for those over 75, a free TV licence.

Around a third of those eligible for Pension Credit are not claiming it and could be missing out on extra money each week. **Make sure you're not missing out.**

Check your eligibility by visiting the government's website at [https://www.gov.uk/pension-credit?es\\_c=964CBD7CE6844A57264241A81C8AA302&es\\_cl=036DBA18FB253D2AF73CFE250E578B8B&es\\_id=p48%c2%a340](https://www.gov.uk/pension-credit?es_c=964CBD7CE6844A57264241A81C8AA302&es_cl=036DBA18FB253D2AF73CFE250E578B8B&es_id=p48%c2%a340), or by calling 0800 99 1234.

### What you'll need to apply for Pension Credit

When making a claim for Pension Credit, you'll need the following information:

- your date of birth
- your National Insurance number – found on payslips, tax papers and letters from the Department for Work and Pensions (DWP)
- how much money you have coming in each week – this could be details of any pension you get from a former employer or a personal pension plan, and how often it's paid
- details of any savings and investments – including the current balance in any bank and savings accounts and details of any investments, such as shares, premium bonds or unit trust certificates
- information on housing costs, such as mortgage interest, service charges or ground rent

If you have a partner, you'll need to have the same information about them.

**Need help claiming Pension Credit?  
Citizens Advice and Age UK can support you**

Citizens Advice provide free, impartial advice on eligibility, assist with completing application forms, and ensure you have all the necessary documents. Staff can guide you through the entire process, helping you secure the financial support you deserve.

<https://www.miltonkeynescab.org.uk/get-advice/>

## **Flooding**

If you, your family or your business are involved in an incident and believe you may be in danger always telephone 999 to request the appropriate emergency assistance.

MKCC has produced advice to help you in the event of a flood emergency and what should you do.

If you have experienced internal flooding, incidents can be reported via the Report a Flood Form: Report a Flood. This report can be used to report flooding issues after an incident has occurred and must not be used in an emergency.

Thank you for contacting the Flood and Water Management Team (Lead Local Flood Authority) at Milton Keynes City Council.

In line with Milton Keynes Council Customer Service Standards, MKCC aim to respond to emails within 5 working days.

During busy periods this may be longer.

If your enquiry is urgent, please contact Milton Keynes City Council Customer Services:

Offices are open from 09:00 - 17:15 Monday to Friday

Telephone: 01908 691691

**Out of hours emergency telephone: 01908 226699**

E-mail: [customerservices@milton-keynes.gov.uk](mailto:customerservices@milton-keynes.gov.uk)

**In the meantime, you may wish to visit The MKCC team online: Flood and water management | Milton Keynes City Council ([www.milton-keynes.gov.uk](http://www.milton-keynes.gov.uk)).**



**Caldecotte South**

I doubt it will come as a surprise to learn that Caldecotte South has experienced flooding again! So much for once in a lifetime occurrence! Flooding has been occurring on what is a flood plain and part of The Great Marsh since the developers moved on to the site. Drainage is woefully inadequate and there is nowhere for the water to go.

There are still only 2 units occupied on the park and so the amount of sewage will be minimal. Yet the manhole cover (see video with Station Road in the background) is pushing up again and the site where the developer intends to build a huge shed is a lake!

The path on the A5 side of the estate was completely impassable (see video).

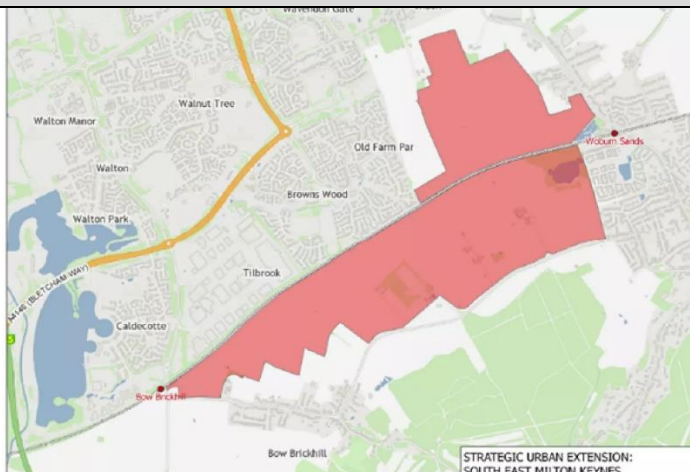
What can be done? Can pressure be put on Anglian Water and MKCC Planners to think more carefully and do more research before they concrete over floodplains? At the Public Inquiry the inspector was reassured that this area was desperate for warehouses and yet over a year since their completion only 2 have been let!. They are the wrong buildings on the wrong site. Common sense told us that!

See attached.



**The annual  
canvass is in  
progress!**

The  
Electoral  
Commission



### **SEM Planning Decision**

**The October Planning meeting has been cancelled!** The two major outline applications for SEM are now likely to come before Committee for consideration of the two Outline applications will happen on 7<sup>th</sup> November at 7pm.

**The next meeting of the SEMK Stakeholder Group has been scheduled for 3<sup>rd</sup> October in the Old School Hall, Walton Road, Wavendon at 5.30pm.**

**Paul Van Geete has made all the arrangements.**

## **MK City Plan 2050**

**By 2050, MK will be  
larger than Cardiff.  
What will the city need?**

Milton Keynes City Council

MK2050

Once the MK2050 Local Plan consultation closes on the 9th of October the next steps of the process are:

- October 2024 – November 2024 Analysing the consultation feedback
- October 2024 – December 2024 Update and finalise evidence
- December 2024 - Finalise redrafted plan
- January 2025 - Delegated decision to consult on the redrafted plan
- February 2025 - Consult on final draft plan
- March 2025 - Consultation on final draft plan concludes
- April 2025 - Preparation of documents ahead of submission to the Secretary of State
- May 2025 - MK City Plan and supporting evidence will be submitted to the Secretary of state for examination by an independent planning inspector.

Dates for the examination stage, receipt of the Inspector's report and adoption of the plan will be published once known.

#### **From MK Citizen**

#### **Village residents slam Milton Keynes City Council plans to obliterate iconic landscape.**

People who live in one of MK's most peaceful villages have vowed to battle plans to 'obliterate' their scenic landscape with hundreds of new homes.

The Brickhill Strategic City Extension is one of a list of proposals in the council's draft MK City Plan 2050.



Ultimately, the plan aims to build 63,000 more houses in order to expand the city's population to 410,000 by the year 2050.

And one of the sites proposed is on land to the south of Bow Brickhill, where 1,500 new homes plus employment places could be built, the plan suggests.

The new plan would totally ruin the landscape of the small village, say residents.

A village spokesperson said this week: "We need more houses but that should not be to the detriment of the existing or future residents."

Another part of the draft plan suggests 2750 houses could be built the farmland slopes leading up to the Greensand Ridge and The Brickhill's to the south of MK.

Villagers say building on this attractive countryside - which has previously been declared unsuitable for development – would be an absolute travesty.

"This clearly does not fit the council's aspirations for sustainable growth," said the spokesperson.

"In every appraisal document, landscape review and planning decision in the past MK council has confirmed that this land is not suitable for development."

He added: "It was designated as an AAL (area of attractive landscape) and is currently considered an SLA in the council's 2024 'Review of Local Landscape Designations' which also details the many reasons why the landscape should be protected.

"Little Brickhill is already designated a conservation area! "

But the plan states a comprehensive mixed-use development would make a "significant contribution" toward meeting the identified need for homes and the council's ambition for long-term growth of the city.

It embodies the principles of "people-friendly, healthy and climate sensitive places", it adds.

You can view the draft Plan 2050 here . It is currently out for public consultation until October 9 and you can give your views on it here.

The Brickhill's spokesperson said: "The council's documents confirm that any development here will not meet their own sustainability criteria but it seems numbers matter more than anything in their relentless pursuit of growth.

"Any planning attempt to mitigate this travesty is doomed to failure as the mitigation and infrastructure costs will render development unviable. We all know what happens then, the community suffers as the facilities and services are sacrificed to developers' profits.

"The giant, empty warehouses that decimate the landscape next to the McDonald's roundabout on the A5 were supposed to provide employment and are testament that the area is too remote, demonstrating the incongruity of development here. "

The villages are urging people to help persuade the council to remove Levante Gate and Bow Brickhill City Extension from the draft plan.

"We must protect our countryside, once it is gone it is gone forever," said the spokesperson.

MK City Council argues that Plan 2050 seeks to bring transformational change, while protecting that which is unique to Milton Keynes and play an important role in the city's future success.

**Note - Draft MK City Plan 2050**

The consultation for our Draft MK City Plan 2050 is still underway, it closes next week on Wednesday 9 October. Please encourage residents to have their say, they can do this by visiting MK City Plan 2050 | Milton Keynes City Council ([milton-keynes.gov.uk](http://milton-keynes.gov.uk))

<https://www.milton-keynes.gov.uk/planning-and-building/planning-policy/mk-city-plan-2050>

## Recent Extreme Weather & Flooding

I shared the attached with Chairs and Parish Clerks) but I thought you might also be interested.

First, in context, this rainfall is the highest recorded at the nearest official met office recording location in Woburn over a 24-hour period since records began in 1895. Secondly, MKCC needs to up its game when it comes to gully clearing, repairs and renewals. The impact of further development with inadequate drainage can only add to these issues as climate change makes its continuing and ever greater impact in the years to come.

<https://www.local.gov.uk/topics/severe-weather/flooding/emergency-planning>

The Civil Contingencies Act 2004 is one of the most relevant pieces of legislation to emergency planning for flooding. It lists local authorities, the Environment Agency and emergency services as 'Category 1' responders to emergencies. (See files attached to this report)

A lot of the problems appear once again to be down to the plethora of blocked drains across MK, certainly on again for us in Woburn Sands and Wavendon. MKCC needs to know what roads have been closed and the locations of the alleged blocked drains.

There will no doubt be a \*Section 19 report examining the causes of the flooding in these areas should the report thresholds have been met.

MKCC will take into account the email of the residents, and this will need to be reviewed as part of the Section 19 report. The resident in Downham Road assumes that the capacity of the drainage systems would / could accommodate that deluge of rain. Flash flooding such as this generally occurs where the rainfall exceeds the carrying capacity of the drainage systems to take it away. As such, the focus on the drainage system and gullies system could be a moot point.

\*Flood Investigation Reports – Section 19 of the Flood and Water Management Act 2010

<https://thefloodhub.co.uk/blog/flood-investigation-reports-section-19-of-the-flood-and-water-management-act-2010/>

MKCC needs to have a record of how they logged all this information, detail and check to see what calls were received and the actions that resulted.

The primary contact at MKCC for this is Nicholas Hannon [Nicholas.Hannon@milton-keynes.gov.uk](mailto:Nicholas.Hannon@milton-keynes.gov.uk)  
Assistant Director - Environment, Waste and Commissioning

Milton Keynes City Council | Milton Keynes Waste Recovery Park, 9 Dickens Road | Milton Keynes | MK12 5QF - [www.milton-keynes.gov.uk](http://www.milton-keynes.gov.uk)

Also

Stuart Proffitt [Stuart.Proffitt@milton-keynes.gov.uk](mailto:Stuart.Proffitt@milton-keynes.gov.uk) – Director Environment & property

Sabina Kupczyk [Sabina.Kupczyk@milton-keynes.gov.uk](mailto:Sabina.Kupczyk@milton-keynes.gov.uk) – Flood & Water Manager

Lead Local Flood Authority [LLFA@milton-keynes.gov.uk](mailto:LLFA@milton-keynes.gov.uk) and Bucks and MK Fire it is

Osborne, Mick [mosborne@bucksfire.gov.uk](mailto:mosborne@bucksfire.gov.uk) Deputy Chief Fire Officer

Some town and Parish councils have Flood Wardens. Flood Wardens are members of the local community – they can be individuals, representatives of the Town or Parish Council or existing volunteers for other emergency planning activities.

Flood Wardens can help local communities to understand their flood risk and that everyone in the community has some degree of responsibility to look after themselves, their family and property and to prepare before, during and after a flood.

There are some examples of town based emergency plans (Newmarket example attached) and West Northants has a page on the issue (unitary and parish interrelationship)

<https://www.westnorthants.gov.uk/flood-resilience/flood-related-roles-parish-councils-and-communities>

And finally, seeking compensation from the authority or body at fault for the flooding. In certain cases, it may be possible to seek compensation for losses caused by flooding. If the flood should and could have been prevented, there may be grounds for suing the body at fault.

### **Marston Vale Line**

Just a reminder that the £1 Ticket has been extended for a further 3 months to run until 16th November.

Please see <https://www.marstonvalecommunityrail.org.uk/1-ticket-offer-extended-again-until-16th-november> for details.

I would be really grateful if you could circulate to your networks and post on your websites & intranet as appropriate, please.

Posts are being scheduled for publication on the Marston Vale CRP Facebook & Twitter/X accounts. Any assistance with sharing would be much appreciated.



**Devolution**



A government report published in September sets out how the Labour government can ‘complete the map’ of English devolution within this parliament, by establishing new mayors and combined authorities across the half of England left out of the devolution process to date. A recommendation to address a so-called “devolution desert” in the South of England is for a mayoral deal incorporating historic county maps of Bedfordshire and Northamptonshire to bring devolution to areas including Luton, Northampton and Milton Keynes. Report attached.

**Recommendation:** Enter negotiations to create Thames Valley combined authority, with or without mayor. Include Milton Keynes in ‘South East Midlands’ deal. Create combined authority across West Northamptonshire and North

Northamptonshire unitary authorities or seek a ‘South East Midlands’ combined authority including authorities in neighbouring Bedfordshire plus Milton Keynes.

- **Recommendation:** Create a South East Midlands mayoral combined authority.



#### Forthcoming Local Road Closures

**NOTICE IS HEREBY GIVEN** that Milton Keynes City Council intends, in not less than seven days from the date of this Notice, to make the above Order under Sections 14(1) and 14(4) of the Road Traffic Regulation Act 1984. The closures are necessary to allow Vattenfall Networks to undertake works to Install ducts for a 33kV network HV cable.

The effect of the above Order will be to close or restrict the following lengths of road between the dates prescribed below:

7th October – 13th October 2024

- Wadesmill Lane, Caldecotte – From its Junction with Cook Close to its junction with Tredington Grove.

Whilst the above length of road is closed the alternative route will be via Chase Avenue, Lichfield Down, Brickhill Street, Heybridge Crescent and Walton Road (and vice versa).

11th November – 17th November 2024

- Monellan Grove, Caldecotte – From its Junction with Bletcham Way to its junction with Caldecotte Lane.

Whilst the above length of road is closed the alternative route will be via Monellan Crescent, Heybridge Crescent, Brickhill Street and Bletcham Way (and vice versa).

25th November – 30th November 2024

- Bond Avenue, Bletchley – From its Junction with Bletcham Way to its junction with Dane Road.

Whilst the above length of road is closed the alternative route will be via Bletcham Way, Watling Street and Bilton Road (and vice versa).

6th January – 12th January 2025

- Sherbourne Drive, Tilbrook – From its Junction with Brickhill Street to its junction with Bradbourne Drive.

Whilst the above length of road is closed the alternative route will be via Brickhill Street and Bradbourne Drive (and vice versa).

6th January – 30th January 2025

- Watling Street, Bletchley (northbound carriageway) – From its Junction with Saxon Street to its junction with Denbigh Road (including one half of Centurion Roundabout).

Whilst the above length of road is closed the alternative route will be via Saxon Street, Bletcham Way and Denbigh Road.

20th January – 8th March 2025

- Denbigh Road, Bletchley – At its junction with Granby Roundabout.

Whilst the above length of road is closed the alternative route will be via Watling Street or via Bletcham Way and Watling Street (and vice versa).

27th January – 16th March 2025

- Watling Street, Bletchley (its southbound carriageway only) – From its Junction with Drew Court to its junction with Grafton Street.

Whilst the above length of road is closed the alternative route will be via Standing Way and Grafton Street (and vice versa)



**Bus Services Changes impacting**

### **Caldecotte & Bow Brickhill**

#### **Route X4 and X40 Arriva: Aylesbury to Milton Keynes via Leighton Buzzard**

Change: Route revisions and timetable change from 5 September. In Milton Keynes buses will serve Bletchley Bus Station and Stadium MK instead of Caldecotte, Open University and Coffee Hall.

MKCC reports as follows - Hope this finds you well.

Please see response below from the Transport team regarding the X4 service.

- The X4 is a commercial route run by Arriva
- Arriva have taken the decision to make timetable and route changes which came into place at the start of September
- MKCC does not have plans to contract any additional services at this time
- The September change summary was posted on the website as soon as the new registrations were confirmed by the traffic commissioner
- For future change dates we will also be including these summaries in Cllr News

- The next agreed change date will be around Christmas/January start of term

Kay Kaur - Customer Service Advisor

### Parish Representatives on Standards Committee

MKCC is looking to appoint 2 co-opted Parish representatives to the Council's Standards Committee. It's the Committee's job to promote and maintain high standards of conduct for elected members in Milton Keynes, and you'll help the Committee to understand the issues faced by Parish, Town and Community Councils.

You'll be required to attend 4 Committee meetings per year, and in return there is a co-optees allowance of £700 plus expenses. Closing date 20 October - contact Alex Melia for an application pack. [Alex.melia@milton-keynes.gov.uk](mailto:Alex.melia@milton-keynes.gov.uk)

## Section 106

### Record of 106 payments

A section 106 agreement is an agreement between a developer and a local planning authority about measures that the developer must take to reduce their impact on the community. A section 106 agreement is designed to make a development possible that would otherwise not be possible, by obtaining concessions and contributions from the developer. It forms a section of the Town And Country Planning Act 1990.

They can be found here

<https://www.milton-keynes.gov.uk/planning-and-building/developingmk/planning-obligations/infrastructure-funding-statement>

Infrastructure Delivery Service contact information

01908 252358

Email [mkgrowth@milton-keynes.gov.uk](mailto:mkgrowth@milton-keynes.gov.uk)

Infrastructure Co-ordination & Delivery Team, Civic, 1 Saxon Gate East, Milton Keynes MK9 3EJ

A local authority may require that a S106 Agreement is entered into where the following tests are met:

The planning obligation is necessary to make a development acceptable in planning terms;

The planning obligation is directly related to the development; and

The planning obligation is fairly and reasonably related in scale and kind to a development.

Section 106 of the Town and Country Planning Act 1990 provides that a planning obligation under a S106 agreement can

- restrict the development or use of the land in any specified way;
- require specified operations or activities to be carried out in, on, under or over the land;
- require the land to be used in any specified way; or
- require a sum or sums to be paid to the local authority on a specific date or periodically.

# OLNEY TOWN COUNCIL



Olney Town Council, The Olney Centre, High Street, Olney MK46 4EF  
Tel: 01234 711679 Email: [townclerk@olneytowncouncil.gov.uk](mailto:townclerk@olneytowncouncil.gov.uk) Website: [www.olneytowncouncil.gov.uk](http://www.olneytowncouncil.gov.uk)

## **Minibus for Olney**

Olney Town Council have secured a grant for a minibus.

There are many residents who are unable to get from their homes to the numerous clubs and socials that are available in the town.

Therefore, we plan to put on a regular bus route throughout the day to help residents to access these and get to the supermarkets and whatever else would enrich living in Olney.

### **What we need:**

**A minibus!** – if anyone has any experience in purchasing, please get in contact.

**EV charging point for the car park in The Olney Centre** – as the majority of trips will be within the town, it makes sense not to have to drive out for fuel; if you have experience and can advise on the best type to install, please let me know.

**Drivers** – if you have a full clean driving licence and would like to volunteer a few hours a week, DBS checks and training would be provided, please get in contact.

**Routes** – if you know anyone who would like to be included on the pickup and drop off route, please let me know.

**Sponsorship** – if you know anyone at any of the supermarkets that we could include on the route in return for sponsorship, please let me know.

This is an exciting project that will doubtless evolve, but any advice to set us on the right track will be gratefully received.

Thank you, Jane Brushwood  
[townclerk@olneytowncouncil.gov.uk](mailto:townclerk@olneytowncouncil.gov.uk)  
01234 711679

Tongwell Street H9 To H10	Walnut Tree (Northbound)	17th October 2024 – 18th October 2024	9:30am - 4:30pm	<a href="https://one.network/?tm=GB140148385">https://one.network/?tm=GB140148385</a>
Walnut Tree Roundabout	Walnut Tree	18th October 2024 – 23rd October 2024	9:30am - 4:30pm	<a href="https://one.network/?tm=GB140148482">https://one.network/?tm=GB140148482</a>

### Remembrance Sunday Parades – Guidance for Parishes

A reminder to Community, Parish and Town Councils that are organising Remembrance parades; in order to be covered by the Milton Keynes City Council public liability insurance you must register yourself as an MKCC volunteer by contacting Kay Pettit.

Please take a moment to read the following guidance to see if this applies to you.

Guidance for Parishes and Town Councils | Annex A | Annex B | Annex C



### Caldecotte South

I can confirm that the application is still in the process of being assessed and is unlikely to be presented to Planning Committee, **until the latter part of the year.**

Jo Orton

Principal Planning Officer (East Team - Development Management)

Tel: 07484921461

Web: [www.milton-keynes.gov.uk/planning](http://www.milton-keynes.gov.uk/planning)

Milton Keynes Council | Civic | 1 Saxon Gate East | Milton Keynes | MK9 3EJ

### September Parishes Forum - For Interest



### Presentations were made involving

- Geographical Information System - Opportunities - Alina Vizireanu (GIS Manager)
- Communities Resilience and Flood Plans - Sabina Kupczyk (Flood and Water Manager)
- Transport Update - MK Connect - Adele Everley-Wearing (Strategic Lead – Transport)
- Customer Services Update - Deborah Carr (Customer Services Operations Manage)



### Note from East West Rail

'We were due to present our latest plans at our statutory consultation in June. However, following the announcement of a general election, and in order to comply with pre-election guidelines, that consultation was paused. Following the election, we're now working closely with new Ministers to agree the next steps for the project. While we understand the desire from stakeholders, landowners and the public for more information, we will of course provide an update as soon as we are able to do so'

E: [sarah.jacobs@eastwestrail.co.uk](mailto:sarah.jacobs@eastwestrail.co.uk)

W: [www.eastwestrail.co.uk](http://www.eastwestrail.co.uk)

.....and most recently

*Good morning, David et al,*

*Thank you for your email.*

*Your request for a meeting is with the office of the CEO who will be assigning availability to all requests for meetings with David.*

*We will be in touch once some availability has been selected.*

*Apologies for the delay but please be assured this is being actioned.*

*Kind regards  
Sarah*

*Sarah Jacobs  
Engagement Manager – Local Representatives Groups  
07971 224 969*



### **How to find out more**

To find out more about road improvements we're carrying out across the East of England, please visit our website at <https://nationalhighways.co.uk/our-work/east/> .

If you would like more information, please contact us on 0300 123 5000, or by email at [info@nationalhighways.co.uk](mailto:info@nationalhighways.co.uk) .

Sean Sharp  
Service Delivery Manager - Operations East, Service Delivery Team  
National Highways Limited | General enquiries: 0300 123 5000 | National Traffic  
Operations Centre, 3 Ridgeway, Quinton Business Park, Birmingham B32 1AF |  
<https://nationalhighways.co.uk> | [info@nationalhighways.co.uk](mailto:info@nationalhighways.co.uk)



Universal's proposed UK theme park could "unlock enormous economic potential and boost growth" for Bedford, says a Universal senior vice president.

Plans for a theme park in the UK were confirmed by Universal in December 2023 after the company purchased a 476-acre parcel of land south of Bedford. Now, Universal Destinations & Experiences' senior vice president of external affairs, John McReynolds, has taken a tour of Bedford town centre and spoken to local businesses.

Via a press release from Bedford Borough Council, the purpose of the tour was to highlight "key local businesses and how Universal's proposed investment will help drive the developments that are

central to the town's economic growth and revitalisation". Universal's proposed park could generate nearly £50 billion for the UK economy during construction and the first 20 years of operations.

Construction would also create a total of 20,000 jobs, and the resort could create 8,000 new jobs once up and running.

Universal recently undertook a period of public engagement for its planned attraction, which has been endorsed by the leaders of six local authorities.

It was later confirmed that the UK's new Labour government is to meet with representatives from NBCUniversal to discuss the plans.

### **Tackling Car Cruising**

We're working with TVP to support a renewed focus on tackling car cruising/street racing (Op Defender). This is an initial pilot, in the Thames Valley region, and Milton Keynes has been selected as the first area in the region to trial it because of the complaints from residents and businesses about dangerous driving and the impact of noise. As part of this operation, TVP will commit additional resources to support an intensification of enforcement activity including the Public Space Protection Order (PSPO). A list of offences that are considered to be breaches of the PSPO can be viewed at [www.milton-keynes.gov.uk/carcrusingpspo](http://www.milton-keynes.gov.uk/carcrusingpspo).

### **And finally**



The leader of the Liberal Democrats opposition group on Milton Keynes City Council has died while attending his party's annual conference.

Robin Bradburn, 68, had also served as deputy leader of the council, when the Lib Dem's and Labour formed a Progressive Alliance.

The party conference in Brighton held a minute's silence for him.

His wife Marie Bradburn is the current mayor of Milton Keynes.

Robin's funeral will take place at 10.00am on Wednesday 9 October at the Church of Christ the Cornerstone. Capacity at the Cornerstone is 300, but a live link to the service is available here <https://www.youtube.com/watch?v=wDPYP3fBijI> (open in Chrome on MKCC devices).



The service will be followed by refreshments before leaving for the Bierton Crematorium, Cane End Lane, Bierton HP22 5BH, where all are welcome. Capacity at the crematorium is 120, but a live link is available <https://watch.obitus.com/> Login details below.

Username: jazo0984 | Password: 901583

Robin's family would be grateful for donations to the Mayor's charity.

***Cllr David Hopkins***

***Representing Little Brickhill at MK City Council***