

Unitary Councillor Report

(Snippets) Report from Cllr David Hopkins, Cllr Victoria Hopkins & Cllr Alice Jenkins – Representing Little Brickhill at MK Council

July 2019



Milton Keynes: A Journey to 2050 is a four-day exhibition being held in the heart of the borough to give everyone the opportunity to come and see what the future plans are for Milton Keynes.

In 2016 the MK Futures 2050 Commission published their report recommending Six Big Projects to transform Milton Keynes, making our great city greater.

It has now been three years since these recommendations were published.

We now want to share our progress with everyone in MK at our exhibition in Middleton Hall, thecentre:mk where you can explore how we are moving forward with our plans for the future of Milton Keynes from Thursday 4 July to Sunday 7 July.

Please visit our website for further details and the full event programme:

<https://www.mkfutures2050.com/milton-keynes-a-journey-to-2050>

We hope to see you down in Middleton Hall over the four days!

Brief Updates

- Meeting with Marie Denny (Tim was present) took place on 17 June
 - Attached information on PSPO Dog Fouling Consultation and Landscaping Presentation - pdf
 - LCTR Slides June 19 v2
 - pdf Speedwatch June 2019
 - Ward Walk
-



Ward Walk - Michael Bracey (CEO - MK Council) has kindly agreed to undertake a ward walk between 2pm and 4pm **on Friday, 19 July. The Chairman of Little Brickhill PC would be invited to attend the meeting in Bow Brickhill and the Chairman of Walton CC invited to attend the meeting in Wavendon.**

I will pick Michael up from Civic and drop him back at the conclusion of 'the walk'.

Given the relatively short period of time available my suggested timetable and agenda is;

2pm - 1 Station Road, Bow Brickhill (Chairman of BBPC)

2.45 pm – Meeting Room Memorial Hall, Woburn Sands (Meeting with members WSTC)

3.30 pm – St Marys CoE School, Wavendon (Head teacher and members WPC)

4 pm - Depart



SEMK and Caldecotte South Consultation

The latest SEMK Stakeholder meeting has been informed that work on development frameworks for SEMK, South Caldecotte and Caldecotte C are being paused, with the Expressway being the reason for the delay. We are asking for an official statement, but from what was said we can deduce that if the Expressway comes anywhere near our little corner, then MKC will wait until the route consultation is concluded. This is apparently autumn 2020 on the current programme. Of course if this autumn's announcement reveals that it's going elsewhere, then it will be all hands to the pumps again!

However even though a development framework won't be advanced at the moment for Caldecotte C and an SPD for South Caldecotte, there still remains the matter of the developer, who could nevertheless put in a planning application. (This won't happen for Caldecotte C because that's owned by the council itself.)

Any planning application would be heard by the council and, going by what Plan:MK says, should not be approved as an SPD is not yet prepared. The Council could refuse an application, and the developer could go to appeal. All that is up to the developer, but if it were me, I wouldn't bother to proceed for the time being (but then I'm not a developer!)

They are also going to undertake a south east MK Transport Assessment - something we've been asking for for a long time. What would be very useful if you could include in your responses to the SPD consultation for South Caldecotte various reasons why the SPD is premature; I'm busy trying to think of all the reasons, but these come to mind.

(a) until the precise route of the Expressway is known the consideration of an SPD is premature

(b) until it is known what work is required (under the Eaton Leys proposals) to McDonald's roundabout, the SPD is premature

(c) until Milton Keynes Council has scheduled and is able to finance the upgrade of their part of Brickhill Street not attributable to the developer, the SPD is premature (see Plan:MK Policy SD14, para 2)

(d) until Milton Keynes Council has carried out the Transport Assessment (Plan:MK SED14 para 3) the SPD is premature

(e) until Milton Keynes Council has carried out a Transport Assessment of the entire south east Milton Keynes area (one is scheduled now to take place).

Here's the consultation page again <https://www.milton-keynes.gov.uk/planning-and-building/planning-policy/south-caldecotte-development-framework-supplementary-planning-document-spd>

A421 Overnight Road Closures during July

The A421 road will be closed overnight for three nights in a row from 17 to 19 July (ending morning of 20 July), and then again for three nights from 22 to 24 July (ending the morning of the 25 July). Each closure will be from 20:00hrs until 06:00hrs the following morning.

There will be two-way traffic lights in place for two nights either side of these closure dates.

The overnight closures will allow us to put in road drainage to take surface rainwater from the carriageway to a nearby pond.



On Monday 24

June MK Council raised the **Armed Forces Day** flag with a ceremony outside Civic. Mayor Sam Crooks, Council Leader Pete Marland and MKC's Armed Forces Champion Cllr Terry Baines paid their own personal tributes.

SingMK – the Councils very own choir group made up of colleagues – entertained the audience ahead of the official proceedings.

On Monday 1 July MK Council is holding a training session for colleagues to learn more about the Armed Forces Covenant, which MKC was proud to sign in 2017. Councillors will be joined by members of the army reserve and cadet units who'll be running stands promoting their work in the Lounge on Civic first floor of the Civic Offices.



Keeping MK Cleaner and Greener

The recent Parish Clean Up Fund one off budget amend of £100k to support Parishes and communities to take part in local clean ups we have so far:

- Distributed 208 litter pick kits
- Supported community events in over 19 litter picks during the recent British Spring Clean campaign
- Have now got a weed treatment machine which available to all Parishes to use on a booking basis (managed by Wolverton & Greenleys Town Council)

Deep cleans across MK continue and 31 areas have had works such as weed clearance, landscaping works, emptying of gullies and sign cleaning

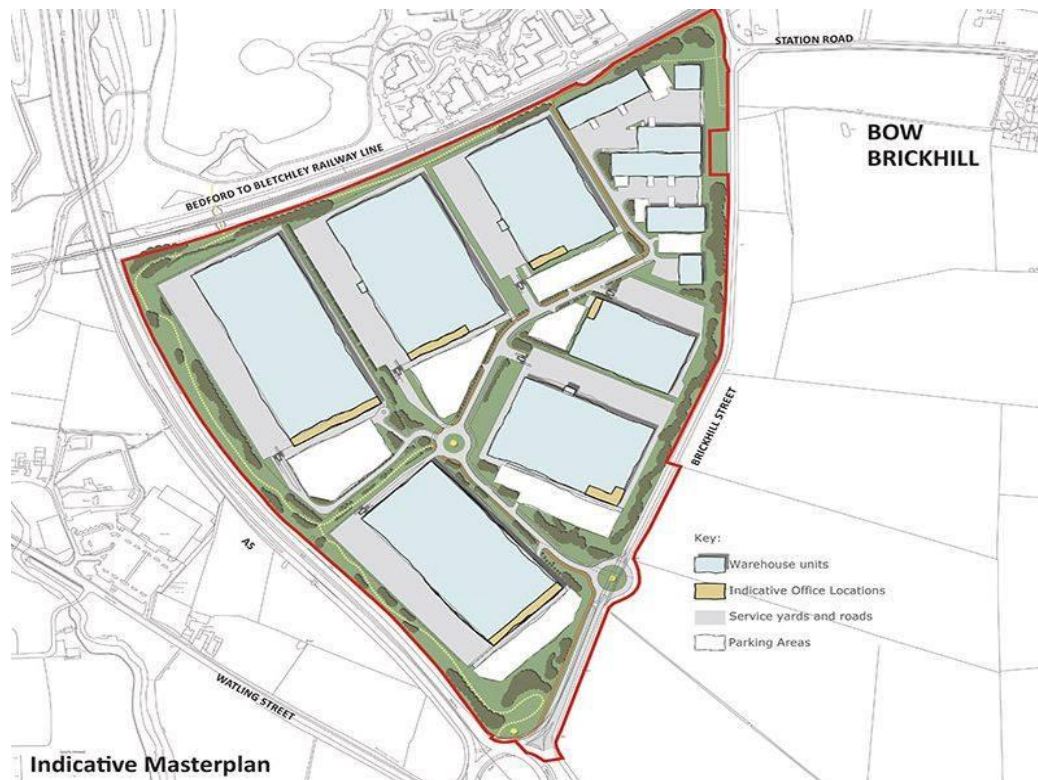
The full details can be found on the Keeping MK Cleaner and Greener flyer attached.

Draft South Caldecotte Development – Consultation opened 8 May 2019 (for 8 weeks)

SOUTH CALDECOTTE DEVELOPMENT FRAMEWORK SUPPLEMENTARY PLANNING DOCUMENT (SPD)

South Caldecotte has been allocated for employment development in Plan:MK. The Development Framework SPD will provide detailed guidance on the development of the site.

The consultation documents and further information on this consultation can be accessed online at: <https://www.milton-keynes.gov.uk/planning-and-building/planning-policy/south-caldecotte-development-framework-supplementary-planning-document-spd>



Thames Valley Police launch Home Security Guide

Being burgled is a traumatic experience. It's not just the financial cost of replacing stolen items, but also the emotional impact of feeling violated after a burglar has been in your home. The Thames Valley PCC has always made burglary a priority for the police and in recent months there have been further reductions in the numbers of burglaries.

Thames Valley Police have also produced a Home Security Guide to help residents with a range of physical and digital security measures. There is also advice on how to avoid invalidating your home insurance through poor security and a handy checklist when going away.

You can reduce the risk of becoming a victim by looking at your home security through the eyes of a burglar. Think about how you would break in if you locked yourself out. You may be surprised at how easy it would be.

Click https://www.thamesvalley.police.uk/SysSiteAssets/media/downloads/thames-valley/advice/home-security-guide.pdf?mc_cid=fa839ca686&mc_eid=5922083af5

to download the Home Security Guide now.

Telephone fraud prevention advice

Following a series of frauds in the Bracknell and Wokingham area Thames Valley Police have issued some crime prevention advice.

Often elderly victims are telephoned and asked them to withdraw cash from their bank account as part of a bogus police investigation.

Residents can reduce the risk of becoming a victim by following our crime prevention advice.

- The police will never ask you to withdraw cash from your bank account, or arrange for a courier to collect valuables from you.
- If you receive a call from someone claiming to be a police officer and asking you to withdraw cash or send valuable items in this way, you should hang up immediately and contact Thames Valley Police on 101. Do not call any other number as you could be speaking to another fraudster.
- When making this call it is important to use a different phone to the one that you have been contacted on. If no other phone is available, you should wait at least five minutes to ensure the phone line has cleared before making the phone call.
- To verify the identity of any police officer, you should ask for their name and shoulder number and then call 101 to speak with the relevant police force. Always make this call from a different telephone, or wait at least five minutes for the line to clear.
- More advice about how to protect yourself against fraud is available on the Thames Valley Police website at: <https://www.thamesvalley.police.uk/advice/advice-and-information/fa/fraud/personal-fraud/>

Disability Awareness Day in Milton Keynes

MK DAD

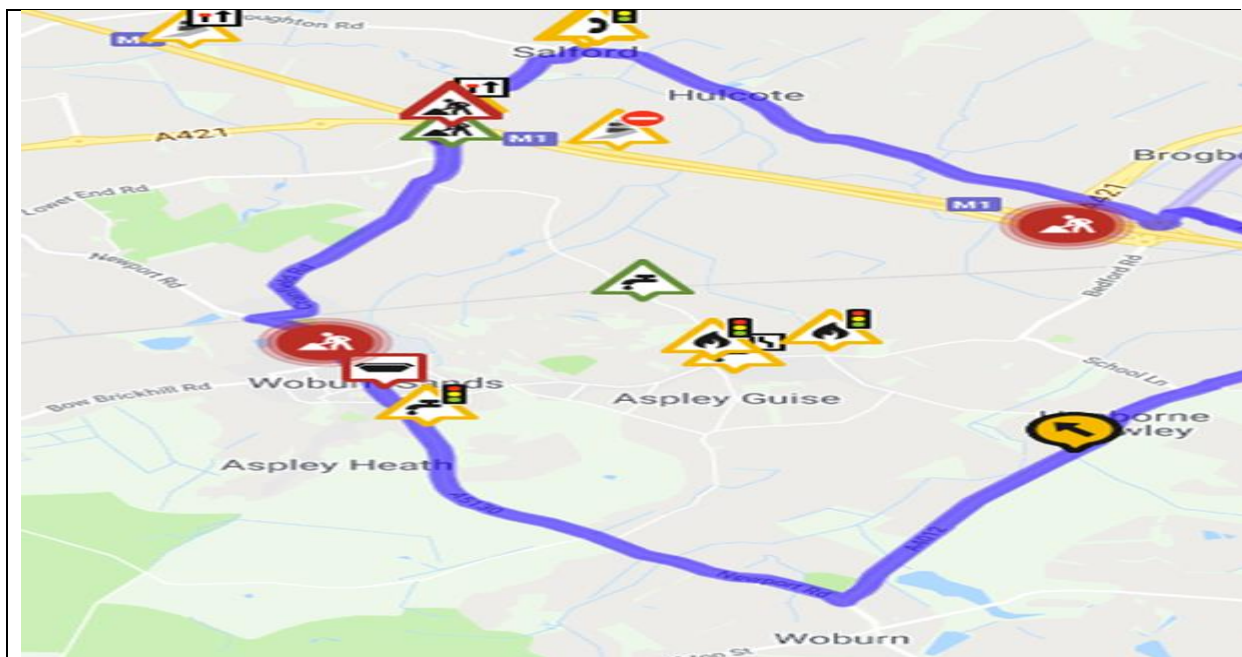
Friday 12th July 12 Noon

At

The Milton Keynes Rose, Campbell Park

afterwards at the MK DAD Art Exhibition Centre MK

Please join us at The Disability Awareness Day Pillar on Friday 12th July at 12 noon - a day to celebrate the enormous talents and strengths of people with disabilities. This year we will also include a short-narrated tour of The Milton Keynes Rose.



Cranfield Road, Wavendon (Road Closure)

Please note that the above road will be closed from 13th May 2019 for a year. This is to enable the bridge to be taken down and reconstructed due to the dual carriageway works of the A421. Diversion map above.

Olivia Bessenay - Streetworks Coordinator- Highways

Central Bedfordshire Council Priory House, Monks Walk, Chicksands, Shefford, Bedfordshire, SG17 5TQ

Direct Dial: 0300 300 5718 | Internal:75718 | Email:

olivia.bessenay@centralbedfordshire.gov.uk

Plan:MK

Council adopts Plan:MK The legal challenge period for Plan:MK closed last week, and we are not aware of any challenges that were lodged.

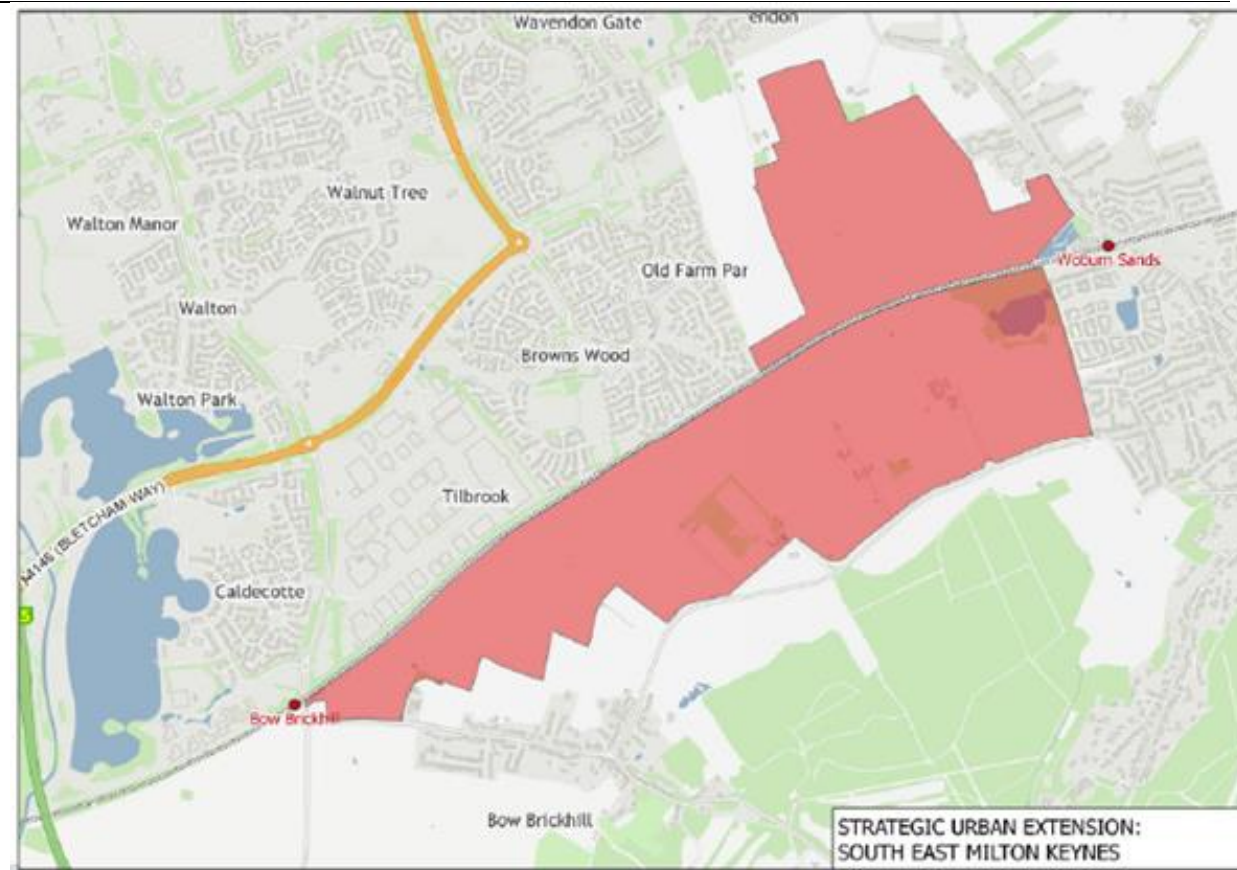
There are no further updates on the SEMK Development Framework, although I am trying to arrange a programme of dates for the Local Stakeholder Group as was discussed at the Danesborough Forum.

Consultation on the South Caldecotte Development Framework commences on 8 May for eight weeks.

Consultation on the Site C Development Brief closed on 29 April.

Andrew Turner - Senior Planning Officer | Development Plans

T: 01908 254892
M: 07775 110432
E: andrew.turner@milton-keynes.gov.uk
W: <https://www.milton-keynes.gov.uk/planning-and-building/>



South East Milton Keynes Strategic Urban Extension (or SEMK) is a draft allocation within Plan:MK, covering an area of land approximately 210 hectares in size encompassed by Tilbrook, Browns Wood and Wavendon to the North, Woburn Sands to the East, the Green Sands Ridge to the south, and Bow Brickhill to the west.

The draft allocation within Plan:MK, under Policy SD13, allocates the land for around 3,000 homes, 7 Gypsy and Traveller pitches, and a range of social and green infrastructure provision.

Contact: Andrew Turner - Senior Planning Officer | Development Plans (T: 01908 254892)

M: 07775 110432 - E: andrew.turner@milton-keynes.gov.uk

W: <https://www.milton-keynes.gov.uk/planning-and-building/>



Sent on behalf of Business and Liaison

Please see attached information about the Supplementary Fund 2019/20 which is available for all parish, town and community councils.

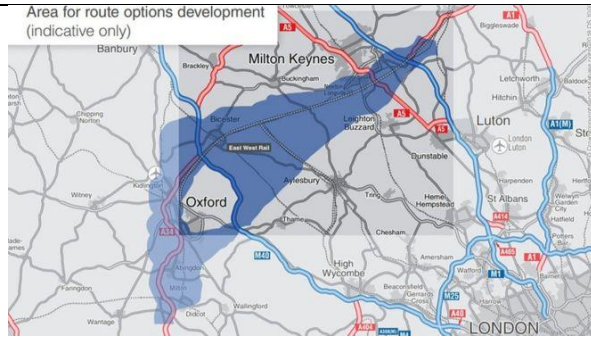
For 2019/20 two funds are available, the Community Infrastructure Fund and the Supplementary Fund

Information, guidance and application form are available on our website <https://www.milton-keynes.gov.uk/your-council-and-elections/councillors-and-committees/parish-and-town-councils/information-for-parish-and-town-councils/parish-grants>

The closing date for applications is 3rd July.

If you have any queries regarding the Supplementary Fund 2019/20 please email business.liaison@milton-keynes.gov.uk

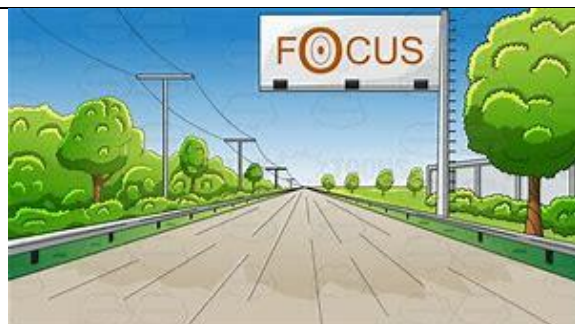
Heather Baker
Partnership Officer – Parish and Town Councils
T: 01908 254597
E: heather.baker@milton-keynes.gov.uk



Expressway Timeline

Date	Event
Autumn 2017	Commitment by the Chancellor for construction to commence on the missing link before the end of the Road Investment Strategy (RIS2) in 2025
2018	Corridor announcement
Autumn 2019	Public consultation on route options*
2020	Preferred route announcement*
2025	Construction starts*
2030	New link opens to the public

*Indicative timetable, subject to preferred route options



East West Rail – Timeline

What is being proposed?

East West Rail Western Section will re-establish a passenger and freight railway between Oxford, Bedford, Milton Keynes, and Aylesbury. Phase 2 involves improving and reconstructing underused and disused sections of the former railway and represents a significant piece of infrastructure investment.

Why do we need to build this?

This scheme will enhance the rail network, create more journey opportunities with reduced journey times and better connections to the Great Western, West Coast and Midland Main Line services, avoiding the need to travel via London. It will reconnect major centres including, Aylesbury, Milton Keynes, Bedford, Bicester, Oxford.

What are the main benefits?

The East West Rail scheme will support economic growth through residential and commercial development along the line of route, boosting business growth and attracting new business and inward investment. The upgrade of the route will provide additional network capacity to accommodate growth in freight and passenger markets by connecting the Oxford to Bedford railway with the Great Western, West Coast and Midland Main Lines.

Who pays for it?

The project is funded by the Department for Transport and by a £45m contribution from the East West Rail Consortium.

What is the new EWR Company? And what is their role in delivering the project?

The East West Railway Company has been formed by the Secretary of State for Transport to optimise the delivery of the East West Railway. This team reviewed the East West Rail proposals and led a value engineering and programme delivery review that identified how the value and benefits from this project can be realised as quickly as is possible. The new EWR Company will run Britain's first integrated rail operation for decades and be a separate organisation to Network Rail. The Company is looking at how the EWR route can be delivered and maintained.

How many EWR2 trains will run and to what destinations?

In addition to existing train services, there will be new services from:

Oxford and Milton Keynes; stopping at Oxford Parkway, Bicester, Winslow and Bletchley. There will be two trains each way per hour.

Oxford and Bedford; stopping at Oxford Parkway, Bicester, Winslow, Bletchley, Woburn Sands and Ridgmont. There will be one train each way per hour.

Milton Keynes and Aylesbury with stops anticipated at Bletchley, Winslow, and Aylesbury Vale Parkway. There will be one train each way per hour.

When will construction start and trains begin to run?

Depending on funding, construction of the line between Bicester and Bletchley will start at the end of 2019 with trains operating from 2023.



Speed Reduction Plan

Please note that the website is now live and accepting applications for 20mph speed limits:

<https://www.milton-keynes.gov.uk/highways-and-transport-hub/road-safety/introduction-of-20-mph-speed-limits-into-residential-areas>



Clear Sacks

The Council is confident with the changes in the delivery method for sacks that they are now on top of the requests that are coming through, if however you have properties that have experienced issues with receiving them prior to the changes last week then please let me know as I will be happy to arrange delivery of these myself.

Tony Brown - Waste Services Officer

Milton Keynes Council, Milton Keynes Waste Recovery Park, 9 Dickens Road, Old Wolverton, Milton Keynes, MK12 5QF

email: Tony.Brown@milton-keynes.gov.uk

Contacts

- For all Serco Landscape contract works enquiries, please contact Euan Darling or Mansour Moini - Please contact the helpline via the link below for new issues.

- For Tree (TPO TCA and Insurance related) enquiries contact Robert Widd.
- For Rights of Way, please contact Rosie Armstrong or James Walsh.
- For High Hedges enquiries and development related Tree issues please contact Stephen Narborough.
- For Planning, S106, Biodiversity and Ecology issues please contact Diane Evans or Phil Snell.
- For Flood Strategy please contact Ashish Patel.

To log a new issue or enquiry, go to: <https://my.milton-keynes.gov.uk/>



Roadworks - The new interactive service allows you to search for any planned works by area, road name, ward or parish, road type or reason. You can also see the current closures and those scheduled for the next two weeks.

Area	Road name	Start Date Start Time	End Date Finish Time	Type
Nothing to report				

This

tool will help you check what is planned for a particular route or area so you can avoid any issues that may affect your journey. The information is updated every week. Some works may be subject to changes due to unforeseen circumstances such as a road traffic collision or incident, weather conditions or operational reasons. Check the Highways View as an

Alternatively you can view the information shown in the Highways Register through a Google map based system on www.roadworks.org

Steven Shearer - Network Support Officer (Highways Services)

Direct: +44 (0)1908 253428

Switchboard: +44 (0)1908 691691

Email : Steven.Shearer2@milton-keynes.gov.uk

Visit Online : <http://www.milton-keynes.gov.uk/streets-transport-and-parking>



WELMEDICAL INFORMATION

The iPAD SP1 AED is a nominated device of the British Heart Foundation Part-funding. This involved a rigorous process where the market was evaluated and every single Ambulance Service in the country was approached to validate AED's for their fitness for purpose. We are continuing to work with the BHF to also develop corporate opportunities. As you are aware this includes a roll out of over 600 iPAD AED's to Asda with other opportunities afoot.

- Dual Adult and Child pads – at the flick of a switch the SP1's dual pads can be used on both children and adults – offering improved simplicity and significant initial cost savings as well as lower on-going cost of ownership.
- Plug-in pad Adapters – These will allow the iPAD SP1 AED to be pad compatible with the equipment carried on front line NHS Ambulance Service vehicles – preventing pad changes at handover
- Very rapid analysis and shock delivery – The technology within the device means that after a cycle of 2 mins of CPR analysis and shock delivery is performed in less than 4 seconds – this means that the pressure built up with CPR does not drain away giving greater chance of ROSC
- Illuminated illustrations and voice prompts – guiding end users at every step using all of the senses
- 5 year/200 shock Battery warranty -, >200 shock capacity which is expected to last up to 5 years from date of receipt (covered by warranty for 4 years)
- 7 Year product warranty with free upgrade to 10 year warranty – all devices purchased by will be covered by an industry best 7 year warranty as standard – We will upgrade this to a 10 year warranty when the devices are registered with us (either via an online form or a physical form)
- Battery Level Indicator – clear indicator of battery level, re-inforced by a flashing visual indicator button as well as verbal prompts.

- Pad Life Indicator – ‘Smart’ electrode technology allows the SP1 to monitor the expiry date of the pads. The LCD display changes to indicate when there is less than three months life left on the pads, and then again when the actual expiry date is reached.
- CPR Detector – determines whether the CPR is being performed and provides reassuring voice prompts. It will encourage CPR to be continued if it senses no compressions
- Data Management – The SP1 stores the last five events on its internal non-volatile memory. Each event can last up to three hours (15 hours total memory)
- SD Card - Data stored on the SP1 can be copied to a standard SD card. This data can be analysed, emailed and printed via the data management software.
- Smart Electrode Technology - as well as monitoring the expiry date of the pads, the SP1 will tell you if the connected pads have been used before or if they have expired. You are not prevented from using these - in case they are the only option - however you are advised of their condition.
- Ambient Noise detector – the device automatically adjusts to background noise and can adjust the volume of voice prompts accordingly up to 90 decibels

The iPad SP1 Package:

The price of an iPad includes:

1 x iPad SP1 AED

1 x carry case

2 x dual adult/child pads 29.95 GBP to replace, last 2 to 3 years.

1 x battery pack (battery life 200 shocks) last up to 5 years, 130.00 GBP to replace

2 x AED starter kits (CPR facial barrier, 2 dry wipes, tough cut scissors, gloves, gallant prep razor)

Anastasia Belokon - Sales and Customer Relations

Anastasia.belokon@welmedical.com

Direct: 01252 933 448 | Office: 01252 344 007

Websites: WEL Medical Limited | iPad AED | DefibSafe Cabinets | Brayden Manikin | OB3000 Suction Machine

David Hopkins / Victoria Hopkins / Alice Jenkins

MKC Senior Staff List Corporate Core - MKC Senior Team 2019

Chief Executive	Michael Bracey	01908 252200
------------------------	-----------------------	---------------------

Contact Us www.milton-keynes.gov.uk	Email: <i>firstname.surname@milton-keynes.gov.uk</i>	Tel: 01908 691691
---	--	--------------------------

Resources Corporate Director	Paul Simpson	01908 253374
Service Director: Legal and Democratic Services	Sharon Bridglalsingh	01908 252095
Service Director: Finance and Resources	Steve Richardson	01908 252756
Head of Revenues and Benefits	Robin Bates	07738 636820
Assistant Director: Audit & Risk Management	Duncan Wilkinson	01908 252089
Service Delivery Manager: ICT	Hazel Lewis	01908 254117
Capital Programme Director	Kamran Rashid	07792 540523
Head of HR	Musrat Zaman	01908 254278
Head of Customer Service, Digital and Transformation	Vacant from November 2017	
People Corporate Director	Michael Bracey	01908 258041
Director of Public Health (Shared with Bedford & Central Bedfordshire Councils)	Muriel Scott	01908 254241
Service Director: Children's Services	Mac Heath	01908 253121
Service Director: Adult Services	Victoria Collins	01908 253270

Assistant Director: Joint Commissioning	Mick Hancock	01908 252091
Place Corporate Director	Duncan Sharkey	01908 253411
Service Director: Housing & Regeneration	Michael Kelleher	01908 254167
Service Director: Public Realm Services	Tom Blackburne-Maze	01908 252213

Service Director: Planning, Culture and Infrastructure	Vacant from August 2017	
Head of Economy and Culture	Pam Gosal	01908 252192
Head of Placemaking	Neil Sainsbury	01908 252708
Head of Development Management	Brett Leahy	01908 252609
MKDP Chief Executive	Charles Macdonald charles.macdonald@mkdp.co.uk	01908 253899
Independent Chair	John Duggan john.duggan@mkdp.co.uk	01908 253405
Director of Strategy & Futures	Geoff Snelson	01908 252665

Acting Service Director: Policy, Insight & Communication s	Sarah Gonsalves	01908 252275
Head of Communications	Kellie Evans	01908 252413

CHANGES TO THE COUNCIL'S SENIOR MANAGEMENT STRUCTURE

Our current three directorate model plus small 'corporate core' was put in place four years ago. While this has helped teams share some closer practices and standards, we're yet to achieve our ambition for fully joined up thinking and working across the whole organisation. This can be frustrating for us, for councillors and for service users.

A new senior management structure is being developed that will help us operate more effectively as one council. The proposals are:

A new Deputy Chief Executive role will lead our critical support services, as well as a number of other business areas.

Instead of the current structure of three Corporate Directors and ten Service Directors, services will be led by nine Directors, who would all be regarded as 'chief officers' and full members of our Corporate Leadership Team (CLT). As you may be aware Duncan Sharkey has left the Council and we will not be replacing either his former role (Corporate Director – Place) or the role of Corporate Director – People.

The corporate core would be replaced with a new Chief Executive's Office, led by an Assistant Chief Executive (replacing the current role of Service Director – Policy, Insight and Communications), whose focus will be on improving organisational effectiveness and performance. Public Health will move into the Chief Executive's Office.

Subject to political agreement, the new structure could be in place by early March. The CEO (Michael Bracey) will share full details then, including a detailed breakdown of who will be leading on specific areas.

Corporate Leadership Team - March 2019

Chief Executive - Michael Bracey, Head of Paid Service
Director - Health and Social Care Integration - Jill Wilkinson
Director - Finance and Resources - Steve Richardson
Director - Law and Governance - Sharon Bridglalsingh
Director – Environment and Property - Stuart Proffitt
Director - Growth, Economy and Culture - Tracy Darke
Director - Adult Services - Victoria Collins
Director - Children's Services - Mac Heath
Director - Housing and Regeneration - Michael Kelleher
Director - Strategy and Futures - Geoff Snelson
Director - Policy, Insight and Communications - Sarah Gonsalves
Director - Public Health - Muriel Scott
Deputy – Chief Executive - Paul Simpson

<p>Finance and Resources Professional finance Revenue and benefits HR ICT Customer services LGSS Audit and risk</p>
<p>Environment and Property Highways Waste and Recycling Transportation Property Facilities Management Regulatory services Health and Safety</p>
<p>Growth, Economy and Culture Place Making Planning Economic development Arts and Heritage Historic environment Leisure Sports development</p>
<p>Law and Governance Legal services Democratic services Elections Civic events and mayoralty Councillor support Governance</p>
<p>Policy, Insight and Communications Policy Partnerships Performance Communications Information Governance Emergency Planning Community safety</p>
<p>Housing and Regeneration Tenancy management Repairs and maintenance Tackling homelessness Strategic housing Regeneration and development Private sector housing Resident engagement and support</p>
<p>Children's Services Schools Early years Youth and community Special needs and disability Safeguarding Family support Children in care Care Leavers</p>
<p>Adult Services Mental health Learning disability Physical disability Older people's services Hospital discharge Adult safeguarding Commissioning</p>
<p>Public Health Health improvement Health protection Public health services Needs assessment Strategy and Futures</p>
<p>Strategy and Futures Delivery of MK2050 Strategy Regional Local Enterprise Partnership Oxford to Cambridge Arc</p>

South Central Ambulance Service - Governor Elections

Do you want to make a difference to your local emergency and non-emergency services?

The South Central Ambulance Service (SCAS) have vacancies for Governors to represent the interests of the public and staff members, general members of the public and stakeholders in local communities.

This is to help provide the best patient care in Buckinghamshire, Oxfordshire, Berkshire, Hampshire, Surrey and Sussex.

SCAS provide 999, NHS 111 and patient transport services in Buckinghamshire, Oxfordshire, Berkshire and Hampshire and patient transport services in Surrey and Sussex.

Governors have lots of important responsibilities such as appointing and holding to account the chair and other non-executive directors, contributing to the development of the Trust's strategy, and engaging with the members who elect them.

Governors need to be confident communicators and able to speak to our members and the public about complex healthcare matters.

SCAS have vacancies for Public Governors across Buckinghamshire, Oxfordshire, Berkshire and Hampshire.

To be eligible to be a Governor you must be a member of the constituency you wish to stand for and be 16 or over.

Members have until the autumn to complete an application to become a Governor

If you've got what it takes to join their team, go to their website <https://www.scas.nhs.uk/get-involved/foundation-trust/> to sign up as a member and find out how to become a Governor