

Unitary Councillor Report

(Snippets) Report from Cllr David Hopkins, Cllr Victoria Hopkins & Cllr Alice Jenkins – Representing Little Brickhill at MK Council

June 2019

Brief Updates



MK University

This week Santander announced a contribution of £30 million to help us deliver MK:U, the UK's first university focused on digital skills and Project Two of our MK Futures programme.

Alongside £10 million in capital financing, Santander will pay £20 million in running costs for the first three years of MK:U's life. It marks the biggest corporate donation to British higher education in recent years, which will help establish the new university, finance iconic buildings and strengthen our position as Europe's leading smart city. Santander's support is a major sign of confidence in MK:U. [Click here to read more.](#)

MK Council CEO Michael Bracey is pictured alongside Nathan Bostock, CEO of Santander UK; Professor Sir Peter Gregson, Vice-Chancellor, Chief Executive of Cranfield University and Professor Lynette Ryals, Chief Executive of MK:U Limited.

Elections - MK Council is out to ad for a new elections manager as Pam Loose is retiring as also for a head of democratic services but Simon heap will act up in the meantime. Our clerk at least will have contact with Pam so good to note a change is coming.

Standards - the Head of Legal Services is always happy to come out to parishes to deliver training and even better or even better to arrange a Danesborough Forum on this theme?

SEMK and area Stakeholder Group - Objectives

The LSG will be engaged by Milton Keynes Council in the preparation of the South East MK Development Framework, which would be adopted as a Supplementary Planning Document by Milton Keynes Council, and will be engaged on any planning application consultations in the future for the South East MK allocation.

Accountability for the decision making on the Development Framework and planning applications will remain with Milton Keynes Council.

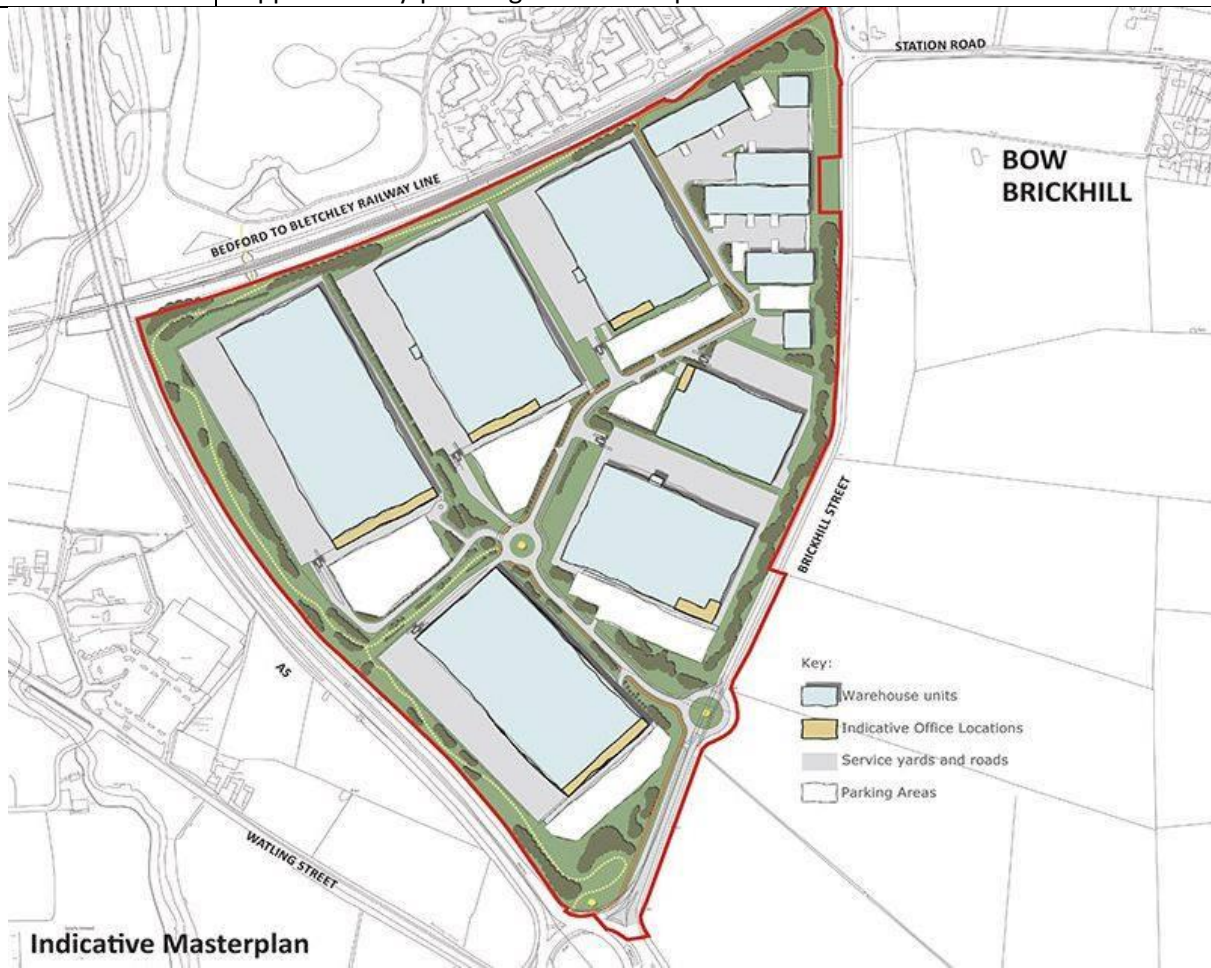
South Caldecotte - Plan:MK allocates land on the south-eastern edge of Milton Keynes for a strategic employment site, providing a minimum of 195,000 sq m of B2/B8 employment space. The Draft South Caldecotte Development Framework has been prepared to ensure that the land allocation is brought forward in a strategic and comprehensive manner.

Draft South Caldecotte Development – Consultation opened 8 May 2019 (for 8 weeks)

SOUTH CALDECOTTE DEVELOPMENT FRAMEWORK SUPPLEMENTARY PLANNING DOCUMENT (SPD)

South Caldecotte has been allocated for employment development in Plan:MK. The Development Framework SPD will provide detailed guidance on the development of the site.

The consultation documents and further information on this consultation can be accessed online at: <https://www.milton-keynes.gov.uk/planning-and-building/planning-policy/south-caldecotte-development-framework-supplementary-planning-document-spd>



From PC Tony Deeble - Have your say meetings have been scheduled to **take place at MK SNAP** on the following dates (all start at 10.30 am).

June 6th, July 4th, August 8th, Sept 5th, Oct 3rd, Nov 7th, Dec 5th

The next Community Forum meeting is yet to be arranged. I will be speaking with the Chair, Ben Dawson before the end of the month with a view to arranging the next meeting before the end of June.

Although there are no particular crimes or trends prevalent in the communities of Danesborough and Walton, it's the perfect time of year to give advice and tips to avoid becoming a victim of crime over the summer months. By following and sharing this advice, your chance of becoming a victim is greatly reduced.

Now that summer is on the way people can become complacent about home security. The most common cases of opportunist summer burglary involve offenders that:

- enter an insecure front door while residents are in the back garden
- enter doors that are closed but unlocked at night while residents are asleep
- reach through windows to take valuable items

Crime reduction advice

- Ensure that windows and doors are closed and locked when you are out. Don't leave small windows open believing them to be safe.
- If you want to leave windows open while you sleep, fit window restrictors so they cannot be fully opened, or make sure they are not large enough to allow access to a burglar.
- When out in your garden ensure that windows and doors to the front of the house are secure. It only takes a second for someone to get into your home and take things without you noticing.
- Do not leave valuables on display in front of windows or in reach of open windows or doors.
- Ensure that all barbecue and garden equipment and tools are securely locked up in a shed and out of sight. Tools can be used by the potential offender to break in to your home.
- Consider fitting outside security lighting or a visible alarm to help deter burglars. Even using pea shingle or gravel on a driveway and spiky plants in garden beds can help.
- Don't leave any keys near entry points where they can be 'fished' or 'hooked' out through the window, letter box or cat flap.
- Ensure any internal handle operated locks on UPVC doors are fully secured with a key.

Sheds – Easy pickings?

Offenders see sheds as easy pickings because they are unprotected and lack basic security measures. The buildings often contain property that can be sold on or implements that can be used to force entry into the owner's home.

- Many sheds whilst being of good construction fall short on basic security.
- It is easy to unscrew the ironmongery, steal contents and in some cases replace the screws to make it look as if the shed has not been tampered with.
- By using tamper proof screws or coach bolts together with a good quality pad bar or hasp and staple and close shackled padlock, the shed owner will make it harder for the

would-be thief.

- It is also a good idea to bond any window glass in, with mastic to prevent easy removal.
- Ensure all tools and equipment are locked away when not in use.
- High-quality locks should be used on doors. Windows can be fitted with a grille or, as a cheaper alternative, chicken wire, to slow a thief down.
- A shed alarm can also be installed.
- Post-coding or indelibly marking all property such as lawnmowers, bikes, and tools using ultra-violet pens, forensic marking such as Selecta DNA or Smartwater or engravers.
- Installing security lighting as a deterrent, and plants such as thorny shrubs to act as a barrier at potential access points.
- If building a shed, putting it where it is most visible to you and neighbours.

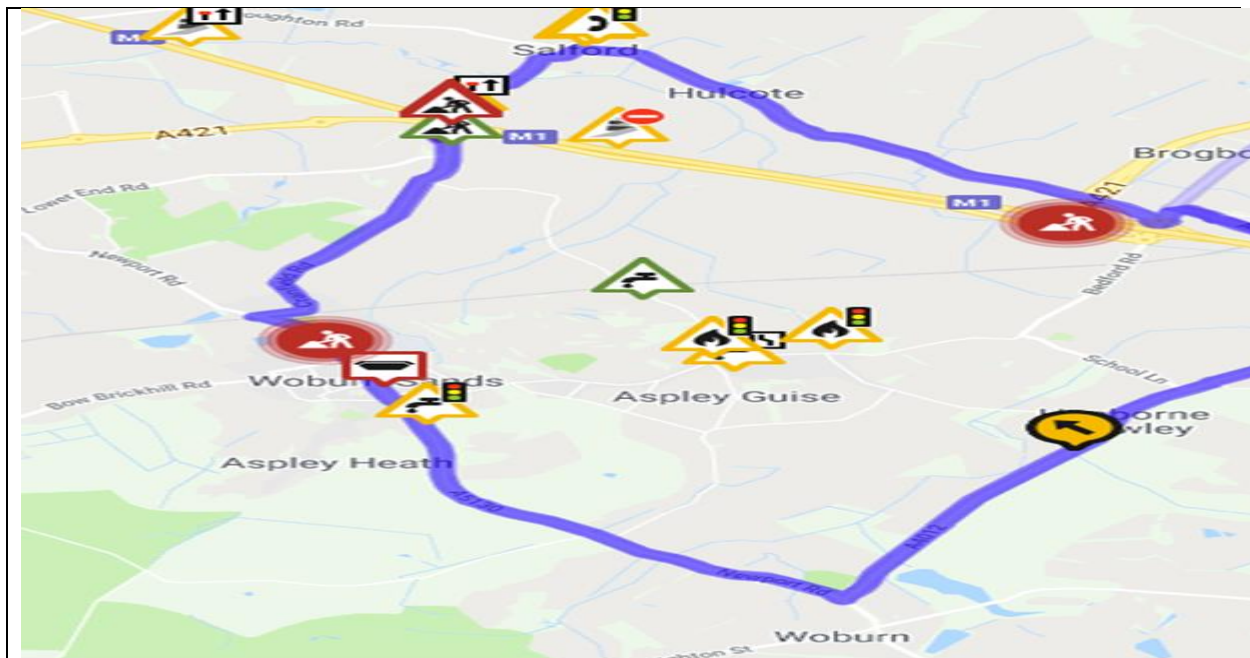
Going on holiday?

- Make your home look occupied.
- If you're out or going away, ask a trusted neighbour to open and close your curtains for you.
- Ask a neighbour if they don't mind parking their car on your driveway and trimming your garden to make your home look occupied.
- Cut the front and back lawns before you go away and trim any plants that burglars could hide behind.
- Cancel milk and newspaper deliveries.
- Before your holiday, don't advertise that you are going away on Facebook, Twitter etc.
- Register for the Royal Mail 'Keepsafe' service.

Your Neighbourhood team of PC Tony Deeble, PCSO Rob Dabnor & PCSO Naomi Wenn will be attending events throughout the summer so please come and see us and say hello.

Contact: Tony Deeble | PC 218 | Milton Keynes Neighbourhood Policing Team South | NS Danesborough & Walton

Telephone 101 Mobile 07813 897 275
Address Fire Station, Childs Way,
Milton Keynes Village
Milton Keynes.



Cranfield Road, Wavendon (Road Closure)

Please note that the above road will be closed from 13th May 2019 for a year. This is to enable the bridge to be taken down and reconstructed due to the dual carriageway works of the A421. Diversion map above.

Olivia Bessenay - Streetworks Coordinator- Highways

Central Bedfordshire Council Priory House, Monks Walk, Chicksands, Shefford, Bedfordshire, SG17 5TQ

Direct Dial: 0300 300 5718 | Internal:75718 | Email:

olivia.bessenay@centralbedfordshire.gov.uk

Plan:MK

Council adopts Plan:MK The legal challenge period for Plan:MK closed last week, and we are not aware of any challenges that were lodged.

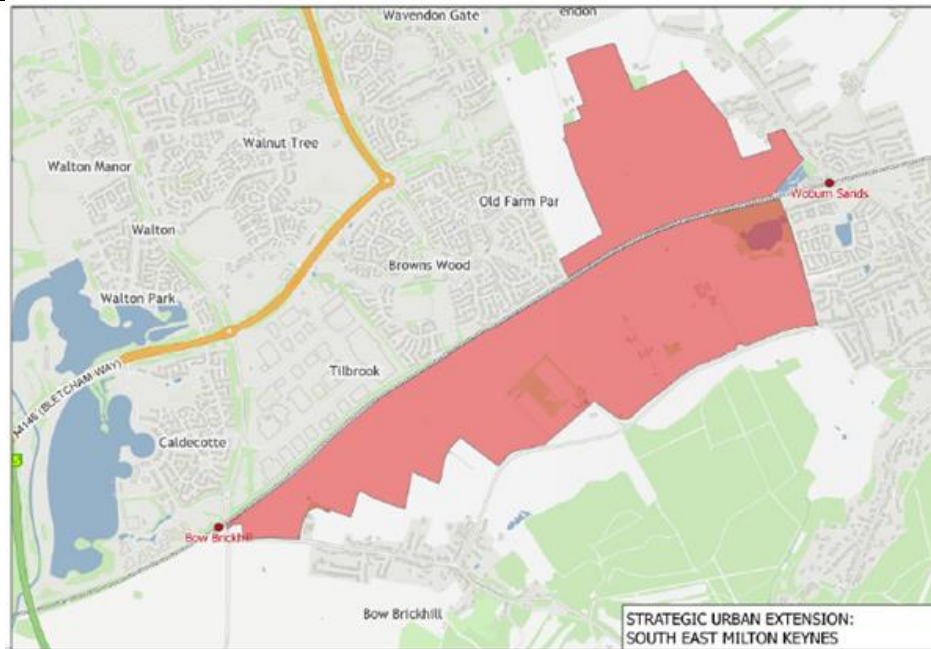
There are no further updates on the SEMK Development Framework, although I am trying to arrange a programme of dates for the Local Stakeholder Group as was discussed at the Danesborough Forum.

Consultation on the South Caldecotte Development Framework commences on 8 May for eight weeks.

Consultation on the Site C Development Brief closed on 29 April.

Andrew Turner - Senior Planning Officer | Development Plans

T: 01908 254892
 M: 07775 110432
 E: andrew.turner@milton-keynes.gov.uk
 W: <https://www.milton-keynes.gov.uk/planning-and-building/>



South East Milton

Keynes Strategic Urban Extension (or SEMK) is a draft allocation within Plan:MK, covering an area of land approximately 210 hectares in size encompassed by Tilbrook, Browns Wood and Wavendon to the North, Woburn Sands to the East, the Green Sands Ridge to the south, and Bow Brickhill to the west.

The draft allocation within Plan:MK, under Policy SD13, allocates the land for around 3,000 homes, 7 Gypsy and Traveller pitches, and a range of social and green infrastructure provision.

Contact: Andrew Turner - Senior Planning Officer | Development Plans (T: 01908 254892)
 M: 07775 110432 - E: andrew.turner@milton-keynes.gov.uk
 W: <https://www.milton-keynes.gov.uk/planning-and-building/>

PLANNING



Three-quarters of residents in the proposed "Oxford-Cambridge Arc" fear the development will harm the local countryside, a survey suggests.

Proposals have been unveiled for one million homes by 2050 along with rail and road links

between the two university cities in an arc through Oxfordshire, Buckinghamshire, Northamptonshire, Bedfordshire and Cambridgeshire.

But the Campaign to Protect Rural England (CPRE) claims building a million new homes in the region would swallow up an area of countryside the size of Birmingham and the project has not been properly assessed or consulted on.

A poll of more than 1,500 residents in the affected counties by Survation for the CPRE found 74% thought the development would lead to damage to the area's countryside and natural environment.

While more than half said they agreed that a million new homes will be necessary for a growing population and would contribute to economic growth, 59% did not support the scale of house-building proposed in the arc.

Protecting and improving the natural environment including wildlife and landscape, and providing more affordable housing for poorer people topped the list of important issues that any plans for growth in the area should address.

And there was overwhelming support for any new house-building to prioritise the needs of people working locally, rather than retirees or commuters to London or elsewhere.

Paul Miner, head of strategic plans and devolution at CPRE, said:

"It is unthinkable that the Government would consider such a vast development proposal, which will have huge and damaging consequences for the countryside and environment, without any sort of assessment of its impact. People are right to be concerned.

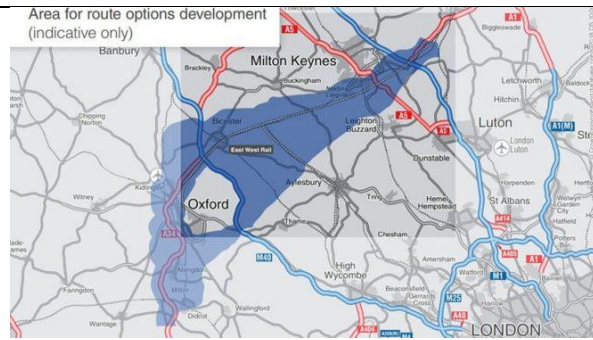
"Rather than ignoring people and the environment in a rush for economic growth, consideration of the full effects on communities and the environment must be given priority. "Before the Government takes these proposals any further, it is imperative that a strategic environmental assessment is carried out, along with a full public consultation on the proposals."

- Paul Miner

The Government said it was committed to protecting and maximising opportunities to enhance our natural environment as it worked in partnership with authorities between Oxford and Cambridge to plan much-needed, high quality homes

“Handled sensitively the Oxford Cambridge arc can be an example to the world of how to both build large numbers of homes for a generation crying out for them, while also leaving the environment in a better state than we found it. This is the challenge and I hope that everyone will join us in rising to it.”

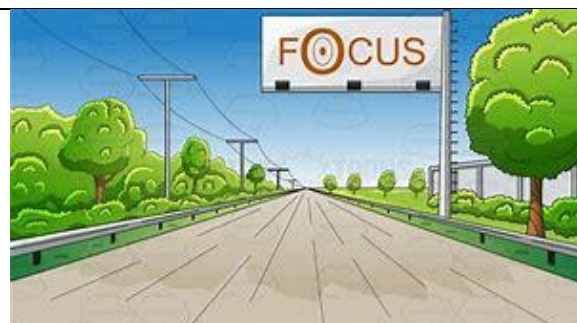
- Minister of State for Housing Kit Malthouse MP



Expressway Timeline

Date	Event
Autumn 2017	Commitment by the Chancellor for construction to commence on the missing link before the end of the Road Investment Strategy (RIS2) in 2025
2018	Corridor announcement
Autumn 2019	Public consultation on route options*
2020	Preferred route announcement*
2025	Construction starts*
2030	New link opens to the public

*Indicative timetable, subject to preferred route options



East West Rail – Timeline

What is being proposed?

East West Rail Western Section will re-establish a passenger and freight railway between Oxford, Bedford, Milton Keynes, and Aylesbury. Phase 2 involves improving

and reconstructing underused and disused sections of the former railway and represents a significant piece of infrastructure investment.

Why do we need to build this?

This scheme will enhance the rail network, create more journey opportunities with reduced journey times and better connections to the Great Western, West Coast and Midland Main Line services, avoiding the need to travel via London. It will reconnect major centres including, Aylesbury, Milton Keynes, Bedford, Bicester, Oxford.

What are the main benefits?

The East West Rail scheme will support economic growth through residential and commercial development along the line of route, boosting business growth and attracting new business and inward investment. The upgrade of the route will provide additional network capacity to accommodate growth in freight and passenger markets by connecting the Oxford to Bedford railway with the Great Western, West Coast and Midland Main Lines.

Who pays for it?

The project is funded by the Department for Transport and by a £45m contribution from the East West Rail Consortium.

What is the new EWR Company? And what is their role in delivering the project?

The East West Railway Company has been formed by the Secretary of State for Transport to optimise the delivery of the East West Railway. This team reviewed the East West Rail proposals and led a value engineering and programme delivery review that identified how the value and benefits from this project can be realised as quickly as is possible. The new EWR Company will run Britain's first integrated rail operation for decades and be a separate organisation to Network Rail. The Company is looking at how the EWR route can be delivered and maintained.

How many EWR2 trains will run and to what destinations?

In addition to existing train services, there will be new services from:

Oxford and Milton Keynes; stopping at Oxford Parkway, Bicester, Winslow and Bletchley. There will be two trains each way per hour.

Oxford and Bedford; stopping at Oxford Parkway, Bicester, Winslow, Bletchley, Woburn Sands and Ridgmont. There will be one train each way per hour.

Milton Keynes and Aylesbury with stops anticipated at Bletchley, Winslow, and Aylesbury Vale Parkway. There will be one train each way per hour.

When will construction start and trains begin to run?

Depending on funding, construction of the line between Bicester and Bletchley will start at the end of 2019 with trains operating from 2023.

**Speed Reduction Plan**

Please note that the website is now live and accepting applications for 20mph speed limits:

<https://www.milton-keynes.gov.uk/highways-and-transport-hub/road-safety/introduction-of-20-mph-speed-limits-into-residential-areas>

**Clear Sacks**

The Council is confident with the changes in the delivery method for sacks that they are now on top of the requests that are coming through, if however you have properties that have experienced issues with receiving them prior to the changes last week then please let me know as I will be happy to arrange delivery of these myself.

Tony Brown - Waste Services Officer

Milton Keynes Council, Milton Keynes Waste Recovery Park, 9 Dickens Road, Old Wolverton, Milton Keynes, MK12 5QF

email: Tony.Brown@milton-keynes.gov.uk

Contacts

- For all Serco Landscape contract works enquiries, please contact Euan Darling or

Mansour Moini - Please contact the helpline via the link below for new issues.

- For Tree (TPO TCA and Insurance related) enquiries contact Robert Widd.
- For Rights of Way, please contact Rosie Armstrong or James Walsh.
- For High Hedges enquiries and development related Tree issues please contact Stephen Narborough.
- For Planning, S106, Biodiversity and Ecology issues please contact Diane Evans or Phil Snell.
- For Flood Strategy please contact Ashish Patel.

To log a new issue or enquiry, go to: <https://my.milton-keynes.gov.uk/>



Roadworks - The new interactive service allows you to search for any planned works by area, road name, ward or parish, road type or reason. You can also see the current closures and those scheduled for the next two weeks.

Area	Road name	Start Date	Start Time	End Date	Finish Time	Type
BOW BRICKHILL	Woburn Sands Road	09/05/19	9:30am	09/05/19	4:30pm	ROAD CLOSURE
WOBURN SANDS	High Street	07/05/19	7.30am	09/05/19	6:30pm	TRAFFIC SIGNALS (Multi-Way)
WOBURN SANDS	Chapel Street	07/05/19	24 hours	09/05/19	24 hours	TRAFFIC SIGNALS (Multi-Way)
WOBURN SANDS	Downham Road	03/05/19	24 hours	08/05/19	24 hours	ROAD CLOSURE
WOBURN SANDS	Tavistock Close	03/05/19	24 hours	08/05/19	24 hours	GIVE & TAKE
WOBURN SANDS	DOWNHAM ROAD	09/05/19	9:30am	09/05/19	12:30pm	ROAD CLOSURE
WOBURN SANDS	THEYDON AVENUE	10/05/19	9:30am	10/05/19	12:30pm	ROAD CLOSURE

This tool will help you check what is planned for a particular route or area so you can avoid any issues that may affect your journey. The information is updated every week.

Some works may be subject to changes due to unforeseen circumstances such as a road traffic collision or incident, weather conditions or operational reasons. Check the Highways View as an

Alternatively you can view the information shown in the Highways Register through a Google map based system on www.roadworks.org

Steven Shearer - Network Support Officer (Highways Services)

Direct: +44 (0)1908 253428

Switchboard: +44 (0)1908 691691

Email : Steven.Shearer2@milton-keynes.gov.uk

Visit Online : <http://www.milton-keynes.gov.uk/streets-transport-and-parking>

David Hopkins / Victoria Hopkins / Alice Jenkins

MKC Senior Staff List Corporate Core - MKC Senior Team 2019

Chief Executive	Michael Bracey	01908 252200
------------------------	-----------------------	---------------------

Contact Us www.milton-keynes.gov.uk	Email: firstname.surname@milton-keynes.gov.uk	Tel: 01908 691691
---	---	--------------------------

Resources Corporate Director	Paul Simpson	01908 253374
Service Director: Legal and Democratic Services	Sharon Bridglingsingh	01908 252095
Service Director: Finance and Resources	Steve Richardson	01908 252756
Head of Revenues and Benefits	Robin Bates	07738 636820
Assistant Director: Audit & Risk Management	Duncan Wilkinson	01908 252089
Service Delivery Manager: ICT	Hazel Lewis	01908 254117
Capital Programme Director	Kamran Rashid	07792 540523
Head of HR	Musrat Zaman	01908 254278
Head of Customer Service, Digital and Transformation	Vacant from November 2017	
People Corporate Director	Michael Bracey	01908 258041
Director of Public Health (Shared with Bedford & Central Bedfordshire Councils)	Muriel Scott	01908 254241
Service Director: Children's Services	Mac Heath	01908 253121

Service Director: Adult Services	Victoria Collins	01908 253270
Assistant Director: Joint Commissioning	Mick Hancock	01908 252091
Place Corporate Director	Duncan Sharkey	01908 253411
Service Director: Housing & Regeneration	Michael Kelleher	01908 254167
Service Director: Public Realm Services	Tom Blackburne-Maze	01908 252213

Service Director: Planning, Culture and Infrastructure	Vacant from August 2017	
Head of Economy and Culture	Pam Gosal	01908 252192
Head of Placemaking	Neil Sainsbury	01908 252708
Head of Development Management	Brett Leahy	01908 252609
MKDP Chief Executive	Charles Macdonald charles.macdonald@mkdp.co.uk	01908 253899
Independent Chair	John Duggan john.duggan@mkdp.co.uk	01908 253405
Director of Strategy & Futures	Geoff Snelson	01908 252665

Acting Service Director: Policy, Insight & Communication s	Sarah Gonsalves	01908 252275
Head of Communications	Kellie Evans	01908 252413

CHANGES TO THE COUNCIL'S SENIOR MANAGEMENT STRUCTURE

Our current three directorate model plus small 'corporate core' was put in place four years ago. While this has helped teams share some closer practices and standards, we're yet to achieve our ambition for fully joined up thinking and working across the whole organisation. This can be frustrating for us, for councillors and for service users.

A new senior management structure is being developed that will help us operate more effectively as one council. The proposals are:

A new Deputy Chief Executive role will lead our critical support services, as well as a number of other business areas.

Instead of the current structure of three Corporate Directors and ten Service Directors, services will be led by nine Directors, who would all be regarded as 'chief officers' and full members of our Corporate Leadership Team (CLT). As you may be aware Duncan Sharkey has left the Council and we will not be replacing either his former role (Corporate Director – Place) or the role of Corporate Director – People.

The corporate core would be replaced with a new Chief Executive's Office, led by an Assistant Chief Executive (replacing the current role of Service Director – Policy, Insight and Communications), whose focus will be on improving organisational effectiveness and performance. Public Health will move into the Chief Executive's Office.

Subject to political agreement, the new structure could be in place by early March. The CEO (Michael Bracey) will share full details then, including a detailed breakdown of who will be leading on specific areas.

Corporate Leadership Team - March 2019

Chief Executive - Michael Bracey, Head of Paid Service
Director - Health and Social Care Integration - Jill Wilkinson
Director - Finance and Resources - Steve Richardson
Director - Law and Governance - Sharon Bridglingsingh
Director – Environment and Property - Stuart Proffitt
Director - Growth, Economy and Culture - Tracy Darke
Director - Adult Services - Victoria Collins
Director - Children's Services - Mac Heath
Director - Housing and Regeneration - Michael Kelleher
Director - Strategy and Futures - Geoff Snelson
Director - Policy, Insight and Communications - Sarah Gonsalves
Director - Public Health - Muriel Scott

Deputy – Chief Executive - Paul Simpson

<p>Finance and Resources</p> <p>Professional finance Revenue and benefits HR ICT Customer services LGSS Audit and risk</p>
<p>Environment and Property</p> <p>Highways Waste and Recycling Transportation Property Facilities Management Regulatory services Health and Safety</p>
<p>Growth, Economy and Culture</p> <p>Place Making Planning Economic development Arts and Heritage Historic environment Leisure Sports development</p>
<p>Law and Governance</p> <p>Legal services Democratic services Elections Civic events and mayoralty Councillor support Governance</p>
<p>Policy, Insight and Communications</p> <p>Policy Partnerships Performance Communications Information Governance Emergency Planning Community safety</p>
<p>Housing and Regeneration</p> <p>Tenancy management Repairs and maintenance Tackling homelessness Strategic housing Regeneration and development Private sector housing Resident engagement and support</p>
<p>Children’s Services</p> <p>Schools Early years Youth and community Special needs and disability Safeguarding Family support Children in care Care Leavers</p>
<p>Adult Services</p> <p>Mental health Learning disability Physical disability Older people’s services Hospital discharge Adult safeguarding Commissioning</p>
<p>Public Health</p> <p>Health improvement Health protection Public health services Needs assessment Strategy and Futures</p>
<p>Strategy and Futures</p> <p>Delivery of MK2050 Strategy Regional Local Enterprise Partnership Oxford to Cambridge Arc</p>